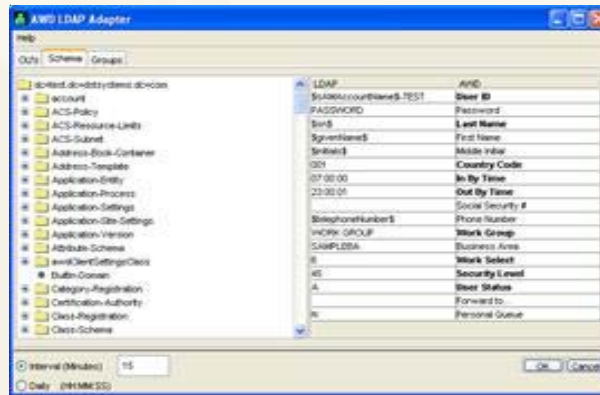
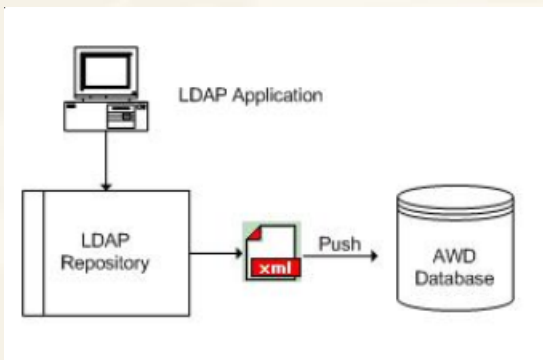


AWD[®]

AWD Identity Management

Businesses are continuing a trend to centralize the management of associate information across their enterprises. AWD Identity Management extensions will allow your organization to leverage user information from an LDAP repository to manage users within AWD. Information such as creating and disabling users and assigning roles can be administered in the LDAP system and synchronized with AWD.



A user interface provides the method for mapping LDAP attributes to AWD user administration fields. This mapping identifies the associate data that will be updated on your AWD system.

A scheduled process queries the LDAP repository to determine changed user information and makes the related changes within AWD. The changes that can be managed include adding new users, updating existing user information, and disabling users who should no longer have access to AWD. New and existing AWD users can be assigned work roles and specific privileges through this process.

The modular design of these extensions allows AWD to support various LDAP schema implementations. The base delivery targets Microsoft's Active Directory schema.

For more information, please call (816) 843-8200, e-mail awdinfo@dstawd.com, or visit our Web site at www.dstawd.com.

Definitions

LDAP Lightweight Directory Access Protocol. A simplified version of the X.500 directory protocol, which defines a method for creating searchable directories of resources available on a network (including people, files, and programs).

Active Directory A central component of the Windows platform, Active Directory service provides the means to manage the identities and relationships comprising network environments.



333 West 11th Street
Kansas City, MO 64105
888.DST.INFO
www.dstsystems.com